

MERCEDES CATALOGUE

Excellence beyond quality



model	page
M-BENZ 641 SERIES	05
M-BENZ 670 2005. M-BENZ ECONOMIC 2007	07
M-BENZ ATEGO I & II 1997-2004	09
M-BENZ AXOR 1996-2003	13
M-BENZ ACTROS MPI 1996-2002	19
M-BENZ ACTROS MEGA MPI 1996-2002	23
M-BENZ ACTROS MPII 2002-2008	27
M-BENZ ACTROS MPIII 2008 -->	35
M-BENZ ACTROS MEGA MPIII 2008 -->	43
M-BENZ ACTROS MPIV (CLASSIC + STREAM SPACE) 2011 -->	47
M-BENZ ACTROS MPIV (GIGA, BIG SPACE) 2011 -->	53

M-BENZ 641 SERIES



The parts referenced in this catalog are not original, but are perfectly adaptable to the models to which they are intended. The use of the manufacturers' marks and the original references is done exclusively for the purpose of indicating the model to which each piece is destined.

M-BENZ 641 SERIES

ALT. D. REF.	O.E.M. REF.	DESCRIPTION
DC0.0655	6418806371	FRONT CORNER BUMPER RIGHT HAND
DC0.0656	6418809970,6418806270	CORNER BUMPER LEFT HAND
DC0.0657	6418816901	FRONT MUDGUARD LEFT HAND HIGH CABIN
DC0.0658	6418817001	FRONT MUDGUARD RIGHT HAND HIGH CABIN
DC0.0659	6418810201	FRONT MUDGUARD LEFT HAND
DC0.0660	6418810301	FRONT MUDGUARD RIGHT HAND
DC0.0661	6418817301	OUTER SILL LEFT HAND HIGH CABIN
DC0.0662	6418817401	OUTER SILL RIGHT HAND HIGH CABIN
DC0.1400	6418800236,6418800238	LOWER BUMPER 2370MM
DC0.1428	6418803770,64188037709,64988500015	MIDDLE BUMPER
DE0.0104	6418200861,A6418200861	HEAD LAMP LEFT HAND
DE0.0105	A6418200961,6418200961	HEAD LAMP RIGHT HAND

M-BENZ 670 2005

M-BENZ ECONIC 2007



DC0.1466



DC0.1468



DC0.1467



DB2.0905
DC0.0552



DC0.0555
DC0.0554



DC0.0559
DC0.0560



DB2.0608



DC0.0561

The parts referenced in this catalog are not original, but are perfectly adaptable to the models to which they are intended. The use of the manufacturers' marks and the original references is done exclusively for the purpose of indicating the model to which each piece is destined.

M-BENZ 670 2005 / ECONIC 2007

670 2005

ALT. D. REF.	O.E.M. REF.	DESCRIPTION
DC0.1466	6738800170	FRONT BUMPER
DC0.1467	6736600201	FOOT STEP LEFT HAND
DC0.1468	6736600301	FOOT STEP RIGHT HAND

ECONIC 2007

ALT. D. REF.	O.E.M. REF.	DESCRIPTION
DB2.0608	A0005447806,0005447806	FOG LAMP RH=LH . ASSY. SAE&ECE HALOGEN
DB2.0905	0028110433,28110433	GLASS W/PLATE, W/HEATER, RIGTH=LEFT SIDE, RADIUS 1200
DC0.0552	0008109516,0008109016	MIRROR HEAD CLASS II RH=LH ELECTRIC HEATED
DC0.0554	0018112033	GLASS W/PLATE, W/HEATER, RH=LH, R1200
DC0.0555	0008111307	MIRROR BACK COVER II RH=LH
DC0.0559	0008109616	MIRROR HEAD CLASS IV RD=LD MANUAL
DC0.0560	0018116033,0018112133	MIRROR GLASS CLASS IV WIDE ANGLE RH=LH
DC0.0561	0028100816,0028103716,94 08102616,9418101016	MIRROR MANUAL NO HEATED

M-BENZ ATEGO I & II 1997- 2004



The parts referenced in this catalog are not original, but are perfectly adaptable to the models to which they are intended. The use of the manufacturers' marks and the original references is done exclusively for the purpose of indicating the model to which each piece is destined.

M-BENZ ATEGO I & II 1997- 2004



DC2.3221



DC0.0559
DC0.0560



DC0.0555
DC0.0558
DC0.0557
DC0.0556



DB2.0463



DC0.0561



DB2.0555



DB0.0940



DB0.0941



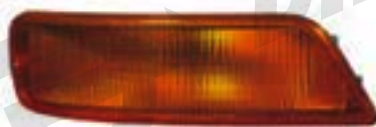
DB2.0582



DB2.0572



DB2.0573

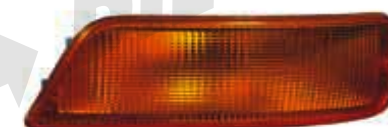


DC0.0548

DB2.0601
DC0.0543



DB2.0734
DC0.0544



DC0.0550

The parts referenced in this catalog are not original, but are perfectly adaptable to the models to which they are intended.
The use of the manufacturers' marks and the original references is done exclusively for the purpose of indicating the model to which each piece is destined.



DB2.0908
DB2.0909
DB2.0912



DB2.0913
DB2.0914



DB0.0940



DB0.0941



DC0.0561



DB2.0552



DB2.0551



DB2.0619
DB2.0554
DB2.0738



DB2.0553
DB2.0620
DB2.0737

ATEGO I & II 1997 - 2004 / 2004-->

ATEGO I & II 1997 - 2004

ALT. D_REF.	O.E.M. REF.	DESCRIPTION
D0500178	9738800470	CORNER BUMPER LEFT HAND
D0500179	9738800570	CORNER BUMPER RIGHT HAND
D0500180	9738801070	CENTRAL BUMPER
DB2.0461	9736662501	FRONT FENDER [WIDE], LH
DB2.0462	9736662901	FRONT FENDER [WIDE], RH
DB2.0463	0007601359	OUTSIDE HANDLE RIGHT HAND=LEFT HAND
DB2.0555	A9738200421	SIDE LAMP RH
DB2.0563	9736663201	FRONT MUDGUARD RIGHT HAND
DB2.0564	9736663101	FENDER LEFT HAND
DB2.0573	A0035445603	TAIL LAMP LH 7 FUNCTIONS
DB2.0582	9738200321	SIDE LAMP LH
DB2.0605	9736663301	FENDER LEFT HAND
DB2.0607	9736663601	FENDER RIGHT HAND
DB2.0868	9736661328	LOWER FOOT STEP RIGHT HAND=LEFT HAND
DB2.0895	A9738800025	LICENCE PLATE
DC0.0543	712380101129,9738200561	HEADLAMP LH MANUAL/ ELECTRIC W/ FOG LAMP
DC0.0544	9738200661,A9738200661 ,A973820066110	HEADLAMP RH MANUAL/ ELECTRIC W/ FOG LAMP
DC0.0548	A9738200221,9738200221	CORNER LAMP RH
DC0.0550	A9738200121,9738200121	CORNER LAMP LH
DC0.0555	0008111307	MIRROR BACK COVER II RH=LH
DC0.0556	0008100279	MIRROR HEAD CLASS II RH= LH MANUAL
DC0.0557	0008100379	MAIN MIRROR CLASS II RH=LH.ELECTRIC
DC0.0558	0018113433,001811343310	MIRROR GLASS CLASS II HEATED R1200
DC0.0559	0008109616	MIRROR HEAD CLASS IV RD=LD MANUAL
DC0.0560	0018116033,0018112133	MIRROR GLASS CLASS IV WIDE ANGLE RH=LH
DC0.0561	0028100816,0028103716,9408102616,9418101016	MIRROR MANUAL NO HEATED
DC0.1369	9738840123	CORNER PANEL, LEFT HAND
DC0.1370	9738840223	CORNER PANEL, RIGHT HAND
DC0.1371	9738801670	CORNER BUMPER LEFT HAND
DC0.1372	9738801770	CORNER BUMPER RIGHT HAND
DC0.1373	9738801170	CENTRAL BUMPER HIGH CABIN 380MM
DC0.1374	9705253439	LEFT HAND BUMPER SUPPORT
DC0.1375	9705253539	RIGHT HAND BUMPER SUPPORT

ALT. D_REF.	O.E.M. REF.	DESCRIPTION
DC0.1378	9736661528	FOOT STEP LEFT HAND
DC0.1379	9736661628	FOOT STEP RIGHT HAND
DC0.1380	9736661428	UPPER STEP PANEL
DC2.3221	9704010025	LID, HUBCAP
DE1.0182	A0035445703	TAIL LAMP ASSY ECE. RH; P21W, R5W
DB0.0940	0015448303,0025440303,0025446903,0025447103	TAIL LAMP LH
DB0.0941	0015448003,0025440403,0025446803,0025447003,002544040364	TAIL LAMP RH
DB2.0601	9738200261	HEADLAMP RH MANUAL/ ELECTRIC W/ FOG LAMP
DB2.0734	9738200161	HEADLAMP LH MANUAL/ ELECTRIC W/ FOG LAMP

ATEGO 2004-->

ALT. D_REF.	O.E.M. REF.	DESCRIPTION
DB2.0551	A9738200521	CORNER LAMP LH W/BLINKER
DB2.0552	9738200621	CORNER LAMP RH W/BLINKER
DB2.0554	9738202961	HEAD LAMP RH ELECTRIC
DB2.0620	A9738202461	HEAD LAMP (ELEC.) W/O FOG LAMP, LH; H1,H7, W5W
DB2.0737	9738202661	HEAD LAMP LH ELECTRIC. W/ FOG LAMP
DB2.0738	9738202761	HEAD LAMP RH ELECTRIC. W/ FOG LAMP
DB2.0908	0008101579,0008102179	MAIN MIRROR CLASE II RH ELECTRIC
DB2.0909	0008101479,0008102379	MAIN MIRROR CLASE II RH MANUAL
DB2.0912	0008101779,0008102279	MAIN MIRROR CLASE II LH MANUAL
DB2.0913	0008101679,0008102479	MIRROR HEAD CLASS IV RD=LD MANUAL
DB2.0914	0028110033	MIRROR GLASS CLASS IV WIDE ANGLE RH=LH
DC0.0561	0028100816,0028103716,9408102616,9418101016	MIRROR MANUAL NO HEATED
DB2.0619	A9738202561	HEAD LAMP (ELEC.) W/O FOG LAMP, LH; H1,H7, W5W
DB2.0553	9738202861,A 9738202861	HEAD LAMP (ELEC.) W/O FOG LAMP, RH; H1,H7, W5W
DB0.0940	0015448303,0025440303,0025446903,0025447103	TAIL LAMP LH
DB0.0941	0015448003,0025440403,0025446803,0025447003,002544040364	TAIL LAMP RH

M-BENZ AXOR 1996-2003



The parts referenced in this catalog are not original, but are perfectly adaptable to the models to which they are intended. The use of the manufacturers' marks and the original references is done exclusively for the purpose of indicating the model to which each piece is destined.



DB2.0343



DB2.0342



DB2.0421



DB2.0412



DB2.0411



DB2.0420



DB2.0423



DB2.0691



DB2.0690



DB2.0422



DB2.0415



DB2.0743



D0500218



DB2.0742



DB2.0414



DB2.0538



DC0.0646



DB2.0539



DB2.0440



DB2.0439



DB2.0495



DB2.0444



DB2.0466
D0700099



DB2.0467
D0700098



DB2.0146



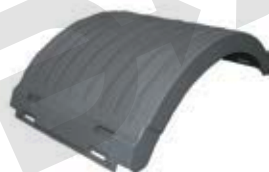
DB2.0145



DB2.0143



DB2.0144



DB2.0147CZ



DC2.2976



DC2.2976



DB2.0353

M-BENZ AXOR 2004-2008



DB2.0908
DB2.0911



DB2.0912
DB2.0911



DB2.0492



DC2.3683
DB2.0911
DB2.0914



DC0.0561



DB2.0492



D0700101



D0700100



DB2.0800



DB2.0745



DB2.0744



DB2.0800



DB2.0797



DB2.0796

The parts referenced in this catalog are not original, but are perfectly adaptable to the models to which they are intended.
The use of the manufacturers' marks and the original references is done exclusively for the purpose of indicating the model to which each piece is destined.

M-BENZ AXOR 1996 - 2003 / 2004 - 2008

AXOR 1996 - 2003

ALT. D_REF.	O.E.M. REF.	DESCRIPTION
D0500536	0028208456	HIGH BEAM LAMP LH
D0500537	0028208556	HIGH BEAM LAMP RH
D0500539	A0028208656	FOG LAMP LH
D0500540	A0028208756	FOG LAMP RH
D0700090	9418202861	HEAD LAMP RH MANUAL
D0700091	9418202761	HEAD LAMP LH MANUAL
DB2.0439	9406662101	FENDER, LH
DB2.0440	9406662201	FENDER, RH
DB2.0441	9406662401	LOWER STEP BOARD LIGHT HAND
DB2.0442	9406662501	LOWER STEP BOARD RIGHT HAND
DB2.0444	9406600101,3756601401	STEP BOARD LEFT HAND
DB2.0445	9406600201,3756601501,9406604801	STEP BOARD RIGHT HAND
DC0.0555	0008111307	MIRROR BACK COVER II RH=LH
DC0.0556	0008100279	MIRROR HEAD CLASS II RH= LH MANUAL
DC0.0557	0008100379	MAIN MIRROR CLASS II RH=LH.ELECTRIC
DC0.0558	0018113433,001811343310	MIRROR GLASS CLASS II HEATED R1200
DC0.0559	0008109616	MIRROR HEAD CLASS IV RD=LD MANUAL
DC0.0560	0018116033,0018112133	MIRROR GLASS CLASS IV WIDE ANGLE RH=LH
DC0.0561	0028100816,0028103716,9408102616,9418101016	MIRROR MANUAL NO HEATED
DC0.1328	9418850825	SIDE APRON LEFT HAND
DC0.1329	9418850925	SIDE APRON RIGHT HAND
DC0.1330	9418850922	MIDDLE LOWER APRON
DB2.0906	0018109216	WIDE ANGLE MIRROR CLASS IV RH=LH MANUAL R300

AXOR 2004 - 2008

ALT. D_REF.	O.E.M. REF.	DESCRIPTION
D0500218	9437500009	UPPER FRONT SUPPORT
D0700098	A9408200161	HEAD LAMP LH MANUAL
D0700099	A9408200261	HEAD LAMP RH MANUAL
D0700100	9408200321	CORNER LAMP LH
D0700101	9408200421	CORNER LAMP LH
DB2.0144	9305200020	REAR MUDGUARD REAR LEFT HAND
DB2.0146	9305200120,A9305200120	REAR MUDGUARD REAR RIGHT HAND
DB2.0147CZ	9305200207,A9305200207	REAR TOP MUDGUARD W/O STRAPE (MEDIUM)
DB2.0342	9417600459	OUTSIDE HANDLE LEFT HAND
DB2.0353	9305200007,A9305200007	REAR TOP MUDGUARD LOW RIGHT HAND=LEFT HAND
DB2.0411	9448800104	SIDE BUMPER LEFT HAND
DB2.0412	9448800204	SIDE BUMPER RIGHT HAND
DB2.0414	9448850725	CORNER SPOILER WITHOUTO HOLE LEFT HAND
DB2.0415	9448850125,9448850825	CORNER SPOILER WITHOUT HOLE RIGHT HAND
DB2.0419	9448800085	FRONT GRILLE
DB2.0420	9448840222	COVER LEFT HAND
DB2.0421	9448840322	COVER RIGHT HAND
DB2.0422	9448840022	SUPPORT LEFT HAND
DB2.0423	9448840122	SUPPORT RIGHT HAND
DB2.0439	9406662101	COVER MUDGUARD LH
DB2.0440	9406662201	COVER MUDGUARD RH
DB2.0466	A9408200461	HEAD LAMP RH ELECTRIC W/ MOTOR
DB2.0467	A9408200361	HEAD LAMP LH ELECTRIC W/ MOTOR
DB2.0143	9305200019	REAR FRONT MUDGUARD LEFT HAND
DB2.0145	A9305200119,9305200119	REAR FRONT MUDGUARD RIGHT HAND

M-BENZ AXOR 2004 - 2008

ALT. D. REF.	O.E.M. REF.	DESCRIPTION
DB2.0492	9408200221	SIDE LAMP RH= LH
DB2.0495	9446660201	STEP BOARD RIGHT HAND
DB2.0538	9448850625	CORNER LOWER SPOILER WITH HOLE RIGHT HAND
DB2.0539	9448850525	CORNER LOWER SPOILER WITH HOLE LEFT HAND
DB2.0619	A9738202561	HEAD LAMP (ELEC.) W/O FOG LAMP, LH; H1,H7, W5W
DB2.0690	9448800270	SIDE BUMPER LEFT HAND
DB2.0691	9448800370	SIDE BUMPER RIGHT HAND
DB2.0742	9408850922	HEAD LAMP RIM LH CHROME
DB2.0743	9408851022	HEAD LAMP RIM RH CHROME
DB2.0744	A9408200056	FOG LAMP LH
DB2.0745	A9408200156	FOG LAMP RH
DB2.0800	A0005445411,0005447211	SIDE LAMP LED RH-LH
DB2.0908	0008101579,0008102179	MAIN MIRROR CLASE II RH ELECTRIC
DB2.0911	0008101879,0008102079	MAIN MIRROR CLASS II LH.ELECTRIC
DB2.0912	0008101779,0008102279	MAIN MIRROR CLASE II LH MANUAL
DB2.0913	0008101679,0008102479	MIRROR GLASS RH=LH MANUAL HEATED R300 2010..>
DB2.0914	0028110033	MIRROR GLASS CLASS IV WIDE ANGLE RH=LH
DC0.0561	0028100816,0028103716,9408102616,9418101016	MIRROR MANUAL NO HEATED
DC0.0646	9418851401	CENTRE BUMPER
DC2.2976	9305200107	MUDGUARD
DB2.0796	0015406370, 001540637010, A0015406370, A001540637010	REAR TAIL LAMP RH 5 FUNCTIONS W/SOCKET
DB2.0797	A0015405770,A0015406270, A001540627010, 0011546270, 0015405770, 0015406270	REAR TAIL LAMP LH 5 FUNCTIONS W/SOCKET
DB2.0444	9406600101,3756601401	STEP BOARD LEFT HAND
DC2.2976	9305200107	TOP MUDGUARD
DC2.3683	0028114633	MAIN MIRROR GLASS CLASS II HEATED R1200

M-BENZ ACTROS MPI 1996 - 2002



The parts referenced in this catalog are not original, but are perfectly adaptable to the models to which they are intended. The use of the manufacturers' marks and the original references is done exclusively for the purpose of indicating the model to which each piece is destined.

M-BENZ ACTROS MPI 1996 - 2002



DB2.0905 (glass)
DC0.0555 (arm)
DC0.0552 (head)
DC0.0554 (heater glass)



DC0.0648



DC0.0561



DC0.0559
DC0.0560



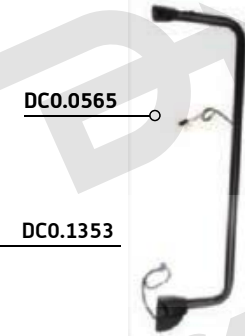
DB2.0518



DC0.0647



DC0.0649



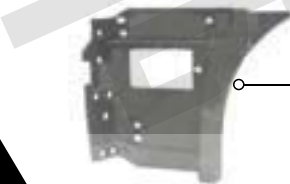
DC0.0565



DC0.1353



DC0.1351



DC0.1307



DE0.0182



DE0.0181



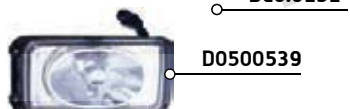
DE0.0150



DE0.0151



D0500540



D0500539



D0700109
D0700090



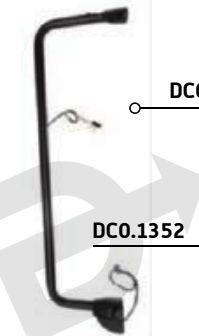
D0700108
D0700091



DB2.0477
D0700092
D0700095



DB2.0476
D0700093
D0700094



DC0.1352



DC0.0650



DC0.0564



DC0.1350



DC0.1308

The parts referenced in this catalog are not original, but are perfectly adaptable to the models to which they are intended.
The use of the manufacturers' marks and the original references is done exclusively for the purpose of indicating the model to which each piece is destined.

M-BENZ ACTROS MPI 1996 - 2002

ALT. D. REF.	O.E.M. REF.	DESCRIPTION
D0500177	9417500009	UPPER FRONT
D0500537	0028208556	HIGH BEAM LAMP RH
D0500539	A0028208656	FOG LAMP LH
D0500540	A0028208756	FOG LAMP RH
D0700090	9418202861	HEAD LAMP RH MANUAL
D0700091	9418202761	HEAD LAMP LH MANUAL
D0700092	9418202661,9418205261,941820526110	HEAD LAMP RH MANUAL
D0700093	9418202561,9418205161	HEAD LAMP LH MANUAL
D0700094	9418203961,9418205761,941820396105	HEADLAMP LH MANUAL H4
D0700095	9418204061,9418205861,941820406105	HEADLAMP RH MANUAL H4
D0700108	9418202961,9418205561,941820296105,A9418202961,A941820296105	HEAD LAMP LH W/O FOG LAMP
D0700109	A9418203061,9418203061,9418205661,941820306105	HEAD LAMP RH W/O FOG LAMP
DB2.0057	0007230035	INSIDE HANDLE LEFT HAND
DB2.0058	0007230135	INSIDE HANDLE RIGHT HAND
DB2.0342	9417600459	OUTSIDE HANDLE LEFT HAND
DB2.0343	9417600559	OUTSIDE HANDLE RIGHT HAND
DB2.0476	9418204361,9418205961,941820436105,A941820436105	HEAD LAMP LH ELECTRIC W/ MOTOR
DB2.0477	9418204461,9418206061,941820446105	HEAD LAMP RH W/ FOG LAMP
DB2.0518	9408105516,9408105616	FRONT MIRROR RH CLASS VI MANUAL
DB2.0905	28110433	GLASS W/PLATE, W/HEATER, RIGTH=LEFT SIDE, RADIUS 1200.
DC0.0552	0008109516,0008109016	MIRROR HEAD CLASS II RH=LH ELECTRIC HEATED
DC0.0554	0018112033	GLASS W/PLATE, W/HEATER, RH=LH, R1200.
DC0.0555	0008111307	MIRROR BACK COVER II RH=LH
DC0.0559	0008109616	MIRROR HEAD CLASS IV RD=LD MANUAL
DC0.0560	0018116033,0018112133	MIRROR GLASS CLASS IV WIDE ANGLE RH=LH
DC0.0561	0028100816,0028103716,9408102616,9418101016	MIRROR MANUAL NO HEATED
DC0.0637	9418840322	AIR CONVEYOR RIGHT HAND. WHITE
DC0.0638	9418840222	AIR CONVEYOR LEFT HAND. WHITE
DC0.0639	9418840522	AIR CONVEYOR RIGHT HAND

ALT. D. REF.	O.E.M. REF.	DESCRIPTION
DC0.0640	9418840422	AIR CONVEYOR LEFT HAND
DC0.0641	9418841122	FRONT CORNER VANE INNER LEFT HAND
DC0.0642	9418841222	FRONT CORNER VANE INNER RIGHT HAND
DC0.0643	9418841422	FRONT CORNER VANE OUTER LEFT HAND
DC0.0644	9418841522	FRONT CORNER VANE OUTER RIGHT HAND
DC0.0645	9418801670	CENTRAL FRONT LOW BUMPER. STEEL
DC0.0646	9418851401	CENTRE BUMPER
DC0.0647	9418802370	FRONT SIDE BUMPER LEFT HAND WITH HOLE
DC0.0648	9418802470	SIDE BUMPER RIGHT HAND WITH HOLE
DC0.0649	9416600301,9416600101	FOOTSTEP RIGHT HAND
DC0.0650	9416600201,9416600001	FOOTSTEP LEFT HAND
DC0.0653	9418801070	FRONT SIDE BUMPER RIGHT HAND WITHOUT HOLE
DC0.0654	9418800970	FRONT SIDE BUMPER LEFT HAND WITHOUT HOLE
DC0.0853	9417511218	CENTRAL GRILLE
DC0.1307	9416600401,94166004012,A94166004017C72	STEPBOARD LEFT HAND
DC0.1308	9416600501,9416660501,94166005012	STEPBOARD RIGHT HAND
DC0.1320	9418801970,94188019704,941880197073,94188019707354	CENTRAL FRONT LOW BUMPER
DC0.1328	9418850825	SIDE APRON LEFT HAND
DC0.1329	9418850925	SIDE APRON RIGHT HAND
DC0.1330	9418850922	MIDDLE LOWER APRON
DC0.1350	9418811501,94188115017C,94188115017C72	FRONY MUDGUARD LH
DC0.1351	9418811601,94188116017C,94188116017C72	FRONY MUDGUARD RH
DC0.1353	9418800322	COVER MUDGUARD RIGHT HAND
DC0.1352	9418800222	COVER MUDGUARD LEFT HAND
DE0.0150	A0015406370,A001540637010	REAR TAIL LAMP RH 5 FUNCTIONS W/SOCKET
DE0.0151	A0015405770,A0015406270,A001540627010	REAR TAIL LAMP LH 5 FUNCTIONS W/SOCKET
DE0.0181	9418200521	SIDE LAMP LH
DE0.0182	9418200921	SIDE LAMP RH

M-BENZ ACTROS MPI 1996 - 2002

ALT. D_REF.	O.E.M. REF.	DESCRIPTION
DC0.0564	0018104414	MIRROR ARM LH
DC0.0565	0018104514	MIRROR ARM CLASS II + IV RH ELECTRIC HEATED
DC0.0631	9415220004	MIDDLE REAR MUDGUARD
DC0.0632	9415200219	REAR MUDGUARD RH
DC0.0633	9415200119	REAR MUDGUARD LH
DC0.0634	9415200220,9415201620	MUDGUARD RH
DC0.0635	9415200120,9415200320	MUDGUARD LH

M-BENZ ACTROS MEGA MPI 1996 - 2002



DCO.1345



DCO.1341



DCO.1325



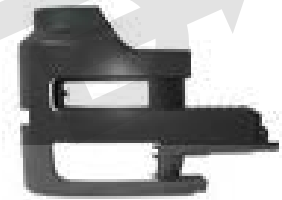
DCO.1349



DCO.1329



DB2.0347



DCO.1332



DCO.1344



DCO.1340



DCO.1324



DCO.1348



DCO.1328



DB2.0348



DCO.1306



DCO.1342



DCO.1342



DCO.1347



D0500177



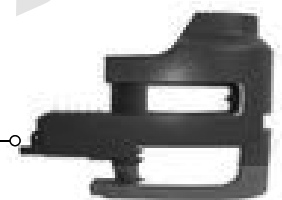
DCO.1320



DCO.1339



DCO.1330



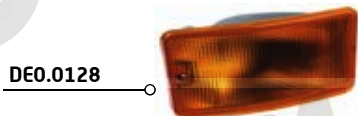
DCO.1331

The parts referenced in this catalog are not original, but are perfectly adaptable to the models to which they are intended. The use of the manufacturers' marks and the original references is done exclusively for the purpose of indicating the model to which each piece is destined.

M-BENZ ACTROS MEGA MPI 1996 - 2002



DCO.0561



DE0.0128



DCO.1351



DCO.1303



DCO.1353



DCO.1360
DCO.1302



DE0.0150



DE0.0151



DCO.1352



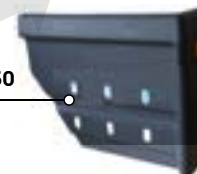
DCO.0559
DCO.0560



DB2.0905
DCO.0555
DCO.0552
DCO.0554



DCO.1358



DCO.1350



D0700109

D0700095



D0700094

D0700108



DCO.0634



DCO.0632



DCO.0631



DCO.0633



DCO.0635

The parts referenced in this catalog are not original, but are perfectly adaptable to the models to which they are intended. The use of the manufacturers' marks and the original references is done exclusively for the purpose of indicating the model to which each piece is destined.

M-BENZ ACTROS MEGA MPI 1996 - 2002

ALT. D. REF.	O.E.M. REF.	DESCRIPTION
D0500177	9417500009	UPPER FRONT
D0700094	9418203961,9418205761,941820396105	HEADLAMP LH MANUAL H4
D0700095	9418204061,9418205861,941820406105	HEADLAMP RH MANUAL H4
DB2.0347	9425202022,94252020225	FRONT MUDGUARD RH
DB2.0348	9425202922,94252029225	FRONT MUDGUARD LH
DB2.0905	28110433,0028110433	GLASS W/PLATE, W/HEATER, RIGTH=LEFT SIDE, RADIUS 1200.
DC0.0552	0008109516,0008109016	MIRROR HEAD CLASS II RH=LH ELECTRIC HEATED
DC0.0554	0018112033	GLASS W/PLATE, W/HEATER, RH=LH, R1200.
DC0.0555	0008111307	MIRROR BACK COVER II RH=LH
DC0.0559	0008109616	MIRROR HEAD CLASS IV RD=LD MANUAL
DC0.0560	0018116033,0018112133	MIRROR GLASS CLASS IV WIDE ANGLE RH=LH
DC0.0561	0028100816,0028103716,9408102616,9418101016	MIRROR MANUAL NO HEATED
DC0.1302	9418101010	GREEN SUNSHADE
DC0.1303	9417500293,9418800020	HANDLE MP1
DC0.1306	9418853822	FRONT MIDDLE GRILLE
DC0.1316	9418900776	TRAP DOOR RH
DC0.1317	9418900676	TRAP DOOR LH
DC0.1320	9418801970,94188019704,941880197073,94188019707354	CENTRAL FRONT LOW BUMPER
DC0.1324	9408851031	SUPPORT LH
DC0.1325	9408851131,A9408851131	SUPPORT RH
DC0.1328	9418850825	SIDE APRON LEFT HAND
DC0.1329	9418850925	SIDE APRON RIGHT HAND
DC0.1330	9418850922	MIDDLE LOWER APRON
DC0.1331	9418802770	CORNER BUMPER LEFT HAND
DC0.1332	9418802870	CORNER BUMPER RIGHT HAND
DC0.1339	9418853522,A9418853522	COVER GRILLE RH
DC0.1340	9416661901	UPPER STEP BOARD LEFT HAND
DC0.1341	9416662001	UPPER STEP BOARD RIGHT HAND
DC0.1342	9416663328	LOWER STEP PANEL RIGHT HAND=LEFT HAND
DC0.1343	9416663428	UPPER STEP PANEL RIGHT HAND=LEFT HAND
DC0.1344	9416662101	STAND PANEL LEFT HAND

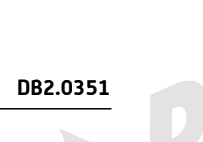
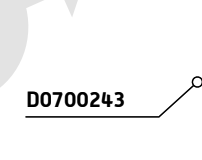
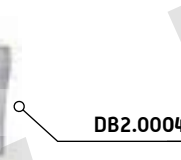
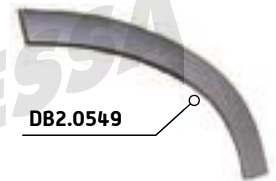
ALT. D. REF.	O.E.M. REF.	DESCRIPTION
DC0.1345	9416662201	STAND PANEL RIGHT HAND
DC0.1347	9416663528	STEP PANEL RIGHT HAND=LEFT HAND
DC0.1348	9416663728	LOWER STEP BOARD LEFT HAND
DC0.1349	9416663828	LOWER STEP BOARD RIGHT HAND
DC0.1350	9418811501,94188115017C,94188115017C72	REAR MUDGUARD LH
DC0.1351	9418811601,94188116017C,94188116017C72	REAR MUDGUARD RH
DC0.1353	9418800322	UPPER MUDGUARD RH
DC0.1352	9415240029,A9415240029	COVER MUDGUARD LEFT HAND
DC0.1358	9305410103,9415410103,A9415410103	COVER BATTERY
DC0.1360	9418100010	GREEN SUNSHADE
DE0.0128	9418200721,941820072110	CORNER LAMP RH= LH AMBER
DE0.0150	A0015406370,A001540637010	REAR TAIL LAMP RH 5 FUNCTIONS W/SOCKET
DE0.0151	A0015405770,A0015406270,A001540627010,0015406270	REAR TAIL LAMP LH 5 FUNCTIONS W/SOCKET
DB2.0892	0018109116	MAIN MIRROR CLASS II RH=LH.ELECTRIC HEATED R1200
DB2.0906	0018109216	WIDE ANGLE MIRROR CLASS IV RH=LH MANUAL R300
DC0.0631	9415220004	MIDDLE REAR MUDGUARD
DC0.0632	9415200219	REAR MUDGUARD RH
DC0.0633	9415200119	REAR MUDGUARD LH
DC0.0634	9415200220,9415201620	MUDGUARD RH
DC0.0635	9415200120,9415200320	MUDGUARD LH
D0700108	9418202961,9418296105,A9418202961,A941820296105	HEAD LAMP LH W/O FOG LAMP
D0700109	A9418203061,9418203061,941820306105	HEAD LAMP RH W/O FOG LAMP

M-BENZ ACTROS MP11 2002-2008



The parts referenced in this catalog are not original, but are perfectly adaptable to the models to which they are intended. The use of the manufacturers' marks and the original references is done exclusively for the purpose of indicating the model to which each piece is destined.

M-BENZ ACTROS MP11 2002-2008



The parts referenced in this catalog are not original, but are perfectly adaptable to the models to which they are intended. The use of the manufacturers' marks and the original references is done exclusively for the purpose of indicating the model to which each piece is destined.

M-BENZ ACTROS MPII 2002-2008



The parts referenced in this catalog are not original, but are perfectly adaptable to the models to which they are intended.
The use of the manufacturers' marks and the original references is done exclusively for the purpose of indicating the model to which each piece is destined.

M-BENZ ACTROS MEGA MP II 2002-2008



The parts referenced in this catalog are not original, but are perfectly adaptable to the models to which they are intended. The use of the manufacturers' marks and the original references is done exclusively for the purpose of indicating the model to which each piece is destined.

M-BENZ ACTROS MEGA MP II 2002-2008



The parts referenced in this catalog are not original, but are perfectly adaptable to the models to which they are intended. The use of the manufacturers' marks and the original references is done exclusively for the purpose of indicating the model to which each piece is destined.

ACTROS MP II 2002 - 2008 / ACTROS MEGA MP II 2002 - 2008

ACTROS MP II 2002 - 2008

ALT. D_REF.	O.E.M. REF.	DESCRIPTION
D0500159	9438840023	FRONT CORNER PANEL LEFT HAND
D0500160	9438840123	FRONT CORNER PANEL RIGHT HAND
D0500162	9438840223	DOWN CORNER PANEL LEFT HAND
D0500163	9438840323	DOWN CORNER PANEL RIGHT HAND
D0500164	9438840623,94388406230	AIR CONVEYER LEFT HAND
D0500165	9438840723,94388407230	AIR CONVEYER RIGHT HAND
D0500218	9437500009	UPPER FRONT SUPPORT
D0500219	9437500218,94375002180	CENTRAL GRILLE
D0500282	9438850001,9438850201	BUMPER LOWER CENTRAL
D0500284	9438800270,9438809872,94388002704,94388098724,94388002707354	CORNER BUMPER WITH FOG LAMP HOLE LEFT HAND
D0500285	9438800370,9438809972,94388003704,94388099724,94388003707354,A94388099727354	CORNER BUMPER WITH FOG LAMP HOLE LEFT HAND
D0600404	943820015664,9438200156	FOG LAMP RH
D0600405	9438200056	FOG LAMP LH
D0700145	A9415220167,9415220167	RUBBER STRAP
D0700243	943660030173,94366003017354,94366003019135,9436600301,9436601001,94366003014,94366003015,94366010014	UPPER FOOTSTEP LEFT HAND
DB0.1935	9436660637,94366606372,94366606374,94366606375,94366606377354,94366606379135,A94366606377C72,A94366606377354,A94366606379135,94366606377C72	STEP EXTENSION COVER
DB2.0001	9438850225,94388502252,94388502255,A94388502257C72,A94388502259135	CENTRAL APRON
DB2.0002	9438850125,94388501252,94388501255	SIDE APRON RIGHT HAND
DB2.0003	9438850025,94388500252,94388500255	SIDE APRON LEFT HAND
DB2.0005	9438800170,9438800173,9438800770,94388007704,94388007705	CORNER BUMPER WITH FOG LAMP HOLE RIGHT HAND
DB2.0006	9438850374	FRONT LOWER BUMPER

ALT. D_REF.	O.E.M. REF.	DESCRIPTION
DB2.0007	94366009014,94366009015,9436600901,94366009017354	STEP BOARD RIGHT HAND
DB2.0008	9436600801,94366008014,94366008015	STEP BOARD LEFT HAND
DB2.0143	9305200019	REAR FRONT MUDGUARD LEFT HAND
DB2.0144	9305200020	REAR MUDGUARD REAR LEFT HAND
DB2.0145	A9305200119,9305200119	REAR FRONT MUDGUARD RIGHT HAND
DB2.0146	9305200120,A9305200120	REAR MUDGUARD REAR RIGHT HAND
DB2.0147CZ	9305200207,A9305200207	REAR TOP MUDGUARD W/O STRAPE (MEDIUM)
DB2.0148	A9436660028,9436660028	STEP PANEL RIGHT HAND=LEFT HAND
DB2.0326	9305200419	REAR MUDGUARD (TWO WHEELS TYPE)
DB2.0329	9436600601,94366006014,94366006015,A94366006017354,A94366006019135	FOOTSTEP LEFT HAND
DB2.0330	9436600701,94366007014,94366007015	FOOTSTEP RIGHT HAND
DB2.0349	9438110010	SUN VISOR HIGH CABINE
DB2.0350	9438110210	SUN VISOR
DB2.0352	9438840174	LOWER SIDE BUMPER RIGHT HAND
DB2.0353	9305200007,A9305200007	REAR TOP MUDGUARD LOW RIGHT HAND=LEFT HAND
DB2.0497	9438200461	HEAD LAMP RH ELECTRIC W/ MOTOR
DB2.0498	9438200361	HEAD LAMP LH ELECTRIC W/ MOTOR
DB2.0518	9408105616,9408105516	FRONT MIRROR RH CLASS VI MANUAL
DB2.0548	9436660937,94366609372,94366609374,94366609375	SILL RIGHT HAND
DB2.0549	9436660837,94366608372,94366608374,94366608375	SILL LEFT HAND
DB2.0550	9436660005,94366600052,94366600057C,94366600057C72	COVER FOOTBOARD
DB2.0562	9438850326,94388503262,94388503264,94388503265	LICENCE PLATE
DB2.0646	9436600201,94366002015	FENDER UPPER RIGHT HAND
DB2.0687	9436600101,94366001014,94366001015,94366001017354,94366001019135	FENDER UPPER LEFT HAND

ACTROS MP II 2002 - 2008 / ACTROS MEGA MP II 2002 - 2008

ACTROS MEGA MP II 2002 - 2008

ALT. D_REF.	O.E.M. REF.	DESCRIPTION
DB2.0816	94366607372,94366607374,94366607375,94366607377354,94366607379135,A94366607377C72,A94366607377354,A94366607379135,94366607372,94366607374,94366607377C72,9436660737	SILL FENDER, R (WIDE)
DB2.0864	9438850322,94388503224,94388503225	GARNISH RIGHT HAND
DB2.0865	9438850222,94388502224,94388502225	GARNISH LEFT HAND
DB2.0866	9438850174	BUMPER GARNISH RIGHT HAND
DB2.0867	9438850074	BUMPER GARNISH LEFT HAND
DB2.0905	28110433	GLASS W/PLATE, W/HEATER, RIGTH=LEFT SIDE, RADIUS 1200.
DC0.0552	0008109516,0008109016	MIRROR HEAD CLASS II RH=LH MANUAL HEATED
DC0.0554	0018112033	GLASS W/PLATE, W/HEATER, RH=LH, RADIUS 1200.
DC0.0555	0008111307	MIRROR BACK COVER II RH=LH
DC0.0559	0008109616	MIRROR HEAD CLASS IV RD=LD MANUAL
DC0.0560	0018116033,0018112133	MIRROR GLASS CLASS IV WIDE ANGLE RH=LH
DC0.0561	0028100816,0028103716,9408102616,9418101016	MIRROR MANUAL NO HEATED
DC0.1346	9436660105	COVER, STEP PANEL
DC0.1997	9438800070,9438800073,9438800670,94388006704,94388006705	CORNER BUMPER WITH FOG LAMP HOLE LEFT HAND
DC2.3212	9438840274	APRON, LH
DC2.3213	A6628200167,A9438201061	HEAD LAMP. UNIT RH. MANUAL (HID); H1, DS1, PY21W, W5W
DC2.3214	A6628200067,A9438200961	HEAD LAMP. UNIT LH. MANUAL (HID); H1, DS1, PY21W, W5W
DE0.0150	A0015406370	REAR TAIL LAMP RH 5 FUNCTIONS W/SOCKET
DE0.0151	A0015405770,A0015406270,A001540627010	REAR TAIL LAMP LH 5 FUNCTIONS W/SOCKET
DE0.0154	9438200161	HEAD LAMP LH MANUAL
DE0.0155	9438200261	HEAD LAMP RH MANUAL
DE0.0181	9438200221,A9438200221,9418200521	SIDE LAMP LH
DE0.0182	9438200321,A9438200321,9418200921	SIDE LAMP RH
DB2.0004	9438850301	OUTER SILL RIGHT HAND HIGH CABIN

ALT. D_REF.	O.E.M. REF.	DESCRIPTION
D0500172	9436660801	STAND PANEL LEFT HAND
D0500173	9436660901	STAND PANEL RIGHT HAND
D0600404	9438200156	FOG LAMP RH
D0600405	9438200056	FOG LAMP LH
D0700146	94375005180,9437500518	MIDDLE GRILLE
D0700251	9438850063	BUMPER GARNISH PANEL, LH
D0700252	9438850163	BUMPER GARNISH PANEL, RH
DB2.0004	9438850301	FRONT UP BUMPER
DB2.0320	9438800004	SIDE BUMPER WITH FOG LAMP & VENT HOLES LEFT HAND
DB2.0321	9438800104	SIDE BUMPER WITH FOG LAMP & VENT HOLES RIGHT HAND
DB2.0332	99418814201,9438813701,94188142014,94388137014,94388137015,94388137017354,94388137019135,A94188142017354,A94388137017354,A94388137019135	REAR- FRONT MUDGUARD LH
DB2.0333	9438813801,94388138014,94388138015,94388138017354,94388138019135,A94388138017354,A94388138019135	REAR- FRONT MUDGUARD RH
DB2.0468	9438809770	CORNER BUMPER WITHOUT FOG LAMP HOLE LEFT HAND
DB2.0469	9438809870	CORNER BUMPER WITHOUT FOG LAMP HOLE RIGHT HAND
DB2.0497	9438200461	HEAD LAMP RH ELECTRIC W/ MOTOR
DB2.0498	9438200361	HEAD LAMP LH ELECTRIC W/ MOTOR
DB2.0518	9408105517	FRONT MIRROR RH CLASS VI MANUAL
DB2.0597	9438850525	CENTRAL FRONT UPPER BUMPER
DB2.0639	9438850526	FLAT LICENCE PLATE
DB2.0642	9436662701	FOOTBOARD RIGHT HAND
DB2.0643	9436662601	FOOTBOARD LEFT HAND
DB2.0824	9438850325	SIDE APRON LEFT HAND
DB2.0825	9438850425	SIDE APRON RIGHT HAND
DB2.0905	0028110433,28110433	GLASS W/PLATE, W/HEATER, RIGTH=LEFT SIDE, RADIUS 1200.
DC0.0552	0008109516,0008109016	COVER MAIN MIRROR RH=LH CLASS II, MANUAL HEATED R1800
DC0.0554	0018112033	GLASS MAIN MIRROR RH=LH CLASS II, MANUAL HEATED R1800
DC0.0555	8111307	MIRROR BACK COVER II RH=LH

ACTROS MP II 2002 - 2008 / ACTROS MEGA MP II 2002 - 2008

ACTROS MEGA MP II 2002 - 2008

ALT. D_REF.	O.E.M. REF.	DESCRIPTION
DC0.0559	8109616	MIRROR HEAD CLASS IV RD=LD MANUAL
DC0.0560	0018116033,0018112133	MIRROR GLASS CLASS IV WIDE ANGLE RH=LH
DC0.0561	0028100816,0028103716,9408102616,9418101016	MIRROR MANUAL NO HEATED
DC0.1340	9416661901	UPPER STEP BOARD LEFT HAND
DC0.1341	9416662001	UPPER STEP BOARD RIGHT HAND
DC0.1342	9416663328	LOWER STEP PANEL RIGHT HAND-LEFT HAND
DC0.1343	9416663428	UPPER STEP PANEL RIGHT HAND=LEFT HAND
DC0.1347	9416663528	STEP PANEL RIGHT HAND=LEFT HAND
DC0.1348	9416663728	LOWER STEP BOARD LEFT HAND
DC0.1349	9416663828	LOWER STEP BOARD RIGHT HAND
DC2.3213	A9438201061,A6628200167	HEAD LAMP. UNIT RH. MANUAL (HID; H1, DS1, PY21W, W5W
DC2.3214	A9438200961,A6628200067	HEAD LAMP. UNIT LH. MANUAL (HID; H1, DS1, PY21W, W5W
DC2.3217	9438803873	CORNER BUMPER W/FOG LAMP & W/O VENT HOLES RH (5 HOLES)
DC2.3219	9438841174	APRON, RH
DC2.3220	9438841074	APRON, LH
DE0.0150	A0015406370	REAR TAIL LAMP RH 5 FUNCTIONS W/SOCKET
DE0.0151	A0015406270	REAR TAIL LAMP LH 5 FUNCTIONS W/SOCKET
DE0.0154	9438200161	HEAD LAMP LH MANUAL
DE0.0155	9438200261	HEAD LAMP RH MANUAL
DE0.0181	9438200221,A9438200221,9418200521	SIDE LAMP LH
DE0.0182	9438200321,A9438200321,9418200921	SIDE LAMP RH



DB2.0857



DB2.0858



DC2.3224



DC2.3225



DB2.0883



DB2.0879



DB2.0880



DB2.0884



DB2.0878



DC2.3181



DB2.0864



DB2.0865



DC2.3182



DB2.0885



DB2.0882



DB2.0872



DB2.0873



DB2.0859



DB2.0861



DB2.0862



DB2.0860



DB2.0881

DB2.0886



DB2.0887



DB2.0888



DB2.0889



DB2.0877



DB2.0646



DB2.0687



D0700242



D0700243



DB2.0330

36cm



DB2.0326



DB2.0326



DB2.0329

36cm



DB2.0146



DB2.0144



DB2.0007

24.5cm



DB2.0145



DB2.0143

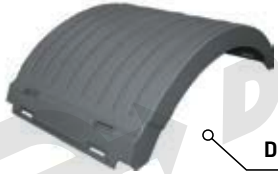


DB2.0008

24.5cm



DC2.2976



DB2.0147CZ



DB2.0353



DC0.0561



D0700145



D0700172



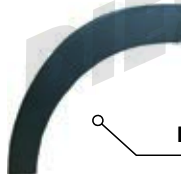
D0700171



DB2.0148



DB2.0548



DB2.0816



DB2.0550

DC0.1346



DB0.1935



DB2.0549

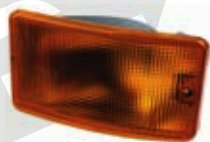


DC2.2302
DC2.2306
DC2.2309
DC2.2305

DC2.2303
DC2.2307
DC2.2308
DC2.2301



DB2.0722



DE0.0182



DC2.2313



DE0.0181



DB2.0723



DB2.0721



D0600404



D0600405



DB2.0720

DE0.0151



DE0.0150



ACTROS MP III 2008 -->

ALT. D_REF.	O.E.M. REF.	DESCRIPTION
D0600404	9438200156	FOG LAMP RH
D0700145	A9415220167,9415220167	RUBBER STRAP
D0700171	9438840060	AIR GRILLE, BUMPER LEFT HAND
D0700172	9438840160	AIR GRILLE, BUMPER RIGHT HAND
D0700242	9436600401,9436601101,94366004014,94366004015,943660040173,9436600401735,4,94366004019135	UPPER FOOTSTEP RIGHT HAND
D0700243	943660030173,94366003017354,94366003019135,9436600301,9436601001,94366003014,94366003015,94366010014	UPPER FOOTSTEP LEFT HAND
DB0.1935	9436600401,9436601101,94366004014,94366004015,943660040173,9436600401735,4,94366004019135	COVER MUDGUARD LH
DB2.0007	94366009014,94366009015,9436600901,94366009017354	STEP BOARD RIGHT HAND
DB2.0008	9436600801,94366008014,94366008015	STEP BOARD LEFT HAND
DB2.0143	9305200019	REAR FRONT MUDGUARD LEFT HAND
DB2.0144	9305200020	REAR MUDGUARD REAR LEFT HAND
DB2.0145	A9305200119,9305200119	REAR FRONT MUDGUARD RIGHT HAND
DB2.0146	9305200120,A9305200120	REAR MUDGUARD REAR RIGHT HAND
DB2.0147CZ	9305200207,A9305200207	REAR TOP MUDGUARD W/O STRAPE (MEDIUM)
DB2.0148	A9436660028,9436660028	STEP PANEL RIGHT HAND=LEFT HAND
DB2.0326	9305200419	REAR MUDGUARD (TWO WHEELS TYPE)
DB2.0329	A9436660028,9436660028	FOOTSTEP LEFT HAND
DB2.0330	9436600701,94366007014,94366007015	FOOTSTEP RIGHT HAND
DB2.0353	9305200007,A9305200007	REAR TOP MUDGUARD LOW RIGHT HAND=LEFT HAND
DB2.0548	9436660937,94366609372,94366609374,94366609375	SILL RIGHT HAND
DB2.0549	9436660837,94366608372,94366608374,94366608375	SILL LEFT HAND
DB2.0550	9436660937,94366609372,94366609374,94366609375	COVER FOOTBOARD
DB2.0646	9436600201,94366002015	FENDER UPPER RIGHT HAND

ALT. D_REF.	O.E.M. REF.	DESCRIPTION
DB2.0687	9436600101,94366001014,94366001015,9436600101735,4,94366001019135	FENDER UPPER LEFT HAND
DB2.0722	9438201461,9438201661	HEADLAMP LH MANUAL AND ELECTRIC
DB2.0723	9438201561,9438201761	HEADLAMP RH MANUAL AND ELECTRIC
DB2.0816	9438201461,9438201661	COVER MUDGUARD RH
DB2.0857	9438806172,94388061724,94388061725	RIGHT FRONT BUMPER TOE WITH HOLE
DB2.0858	9438806072,94388060724,94388060725	LEFT FRONT BUMPER TOE WITH HOLE
DB2.0859	9438842022,9438843022,A9438843022	CORNER PANEL LEFT HAND
DB2.0860	9438841922	CORNER PANEL RIGHT HAND
DB2.0861	9438841822,9438842722,94388418222	AIR CNVERVER RIGHT HAND
DB2.0862	9438841722,9438842622,94388417222	AIR CNVERVER LEFT HAND
DB2.0864	9438850322,94388503224,94388503225	GARNISH RIGHT HAND
DB2.0865	9438850222,94388502224,94388502225	GARNISH LEFT HAND
DB2.0872	9438851522,A9438851522	GRILLE, SPOILER RIGHT HAND
DB2.0873	9438851422	GRILLE, SPOILER LEFT HAND
DB2.0877	9437501418,94375014182,94375014185	PANEL GRILLE
DB2.0878	9438851825,94388518252,94388518255	MIDDLE SPOLIER
DB2.0879	9438851725,94388517252,94388517255	RIGHT HAND SIDE SPOLIER
DB2.0880	9438851625,94388516251,94388516252,94388516255	LEFT HAND SIDE SPOLIER
DB2.0881	9438851122	COVER MIDDLE SPOILER
DB2.0882	9438851222	GRILLE SPOLIER LEFT HAND
DB2.0883	9438806372	SIDE BUMPER WITH VENT & NOZZLE HOLE RIGHT HAND
DB2.0884	9438806272	SIDE BUMPER WITH VENT & NOZZLE HOLE LEFT HAND
DB2.0885	9438851322	GRILLE, SPOLIER RIGHT HAND
DB2.0886	9437514318,9437514818	GRILLE MESH RIGHT HAND
DB2.0887	9437514118,9437514518	GRILLE MESH LEFT HAND

ACTROS MP III 2008 -->

ALT. D. REF.	O.E.M. REF.	DESCRIPTION
DB2.0888	9437514418,9437515018	GRILLE MESH RIGHT HAND
DB2.0889	9437514218,9437514718	GRILLE MESH LEFT HAND
DC0.0561	0028100816,0028103716,9408102616,9418101016	MIRROR MANUAL NO HEATED
DC0.1346	9436660105	COVER, STEP PANEL
DC2.2302	9438106016	COMPLETE MIRROR CLASS II+ IV RH. MAIN MIRROR CLASS II ELECTRIC R1200, WIDE ANGLE MIRROR CLASS IV MANUAL R300., HEATED
DC2.2303	9438105816	COMPLETE MIRROR CLASS II+ IV LH. MAIN MIRROR CLASS II ELECTRIC R1200, WIDE ANGLE MIRROR CLASS IV MANUAL R300., HEATED
DC2.2304	0028113333,0028113533,A0028113333	MIRROR GLASS CLASS II LH HEATED R1200
DC2.2305	0028113433	MIRROR GLASS CLASS II RH HEATED R1200
DC2.2306	0028113833,A0028113833	WIDE ANGLE MIRROR GLASS CLASS IV RH MANUAL HEATED R300
DC2.2307	0028113733,A0028113733	WIDE ANGLE MIRROR GLASS CLASS IV LH MANUAL HEATED R300
DC2.2308	9438110407,A9438110407	MAIN MIRROR COVER RH CLASS II
DC2.2309	9438110307,A9438110307	MAIN MIRROR COVER LH CLASS II
DC2.2313	A9438105116,9438105116	FRONT MIRROR CLASS VI RH HETEAD R300
DC2.2976	9305200107	MUDGUARD
DC2.3185	9438804070	SIDE BUMPER W/NOZZLE HOLE W/O F/LAMP&VENT HOLE, RH
DC2.3224	9438806572	SIDE BUMPER W/FOG LAMP HOLE & NOZZLE HOLE, RH
DC2.3225	9438806472	SIDE BUMPER W/FOG LAMP HOLE & NOZZLE HOLE, LH
DC2.3226	9438803970	SIDE BUMPER W/VENT HOLE W/O F/LAMP&VENT HOLE, LH
DB2.0721	A9438202361	HEAD LAMP MAN. (HID TYPE) RH; H1, H7, D1S, PY21W, W5W
DB2.0720	A9438202261	HEAD LAMP MAN. (HID TYPE) LH; H1, H7, D1S, PY21W, W5W
DE0.0150	A0015406370, A001540637010	REAR TAIL LAMP RH 5 FUNCTIONS W/SOCKET
DE0.0151	A0015405770,A0015406270, A001540627010,0011546270	REAR TAIL LAMP LH 5 FUNCTIONS W/SOCKET
DE0.0181	9438200221,A9438200221,9418200521	SIDE LAMP LH
DE0.0182	9438200321,A9438200321,9418200921	SIDE LAMP RH

M-BENZ ACTROS MEGA MP III 2008-->



DB2.0321

D0700172

DB2.0689

DC2.3231

DB2.0859

DB2.0861

DB2.0870

DB2.0879

DB2.0872

DB2.0874

DB2.0885

DB2.0869

DB2.0878

DB2.0881

DB2.0320

D0700171

DB2.0688

DC2.3232

DB2.0860

DB2.0862

DB2.0871

DB2.0880

DB2.0873

DB2.0875

The parts referenced in this catalog are not original, but are perfectly adaptable to the models to which they are intended. The use of the manufacturers' marks and the original references is done exclusively for the purpose of indicating the model to which each piece is destined.

M-BENZ ACTROS MEGA MP III 2008-->



DC0.1341



DB2.0642



D0500173



DC0.1349



DC0.1342



DC0.1348



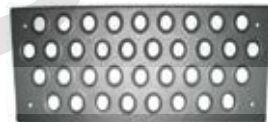
D0500172



DB2.0146



DB2.0326



DC0.1343



DC2.2976



DB2.0144



DB2.0145



DB2.0353



DC0.1347



D0700145



DB2.0147CZ



DB2.0143



DC0.1340



DB2.0643



DC0.1340

M-BENZ ACTROS MEGA MP III 2008-->



DC2.2302
DC2.2306
DC2.2309
DC2.2305



DC2.2303
DC2.2304
DC2.2307
DC2.2308



DB2.0722



DC2.2313



DC0.0561



DB2.0723



DB2.0721



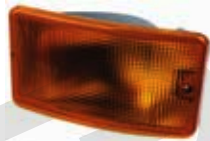
D0600404



D0600405



DB2.0720



DE0.0182



DE0.0181

DE0.0151



DE0.0150

The parts referenced in this catalog are not original, but are perfectly adaptable to the models to which they are intended.
The use of the manufacturers' marks and the original references is done exclusively for the purpose of indicating the model to which each piece is destined.

M-BENZ ACTROS MEGA MP III 2008 -->

ALT. D_REF.	O.E.M. REF.	DESCRIPTION
D0500172	9436660801	STAND PANEL LEFT HAND
D0500173	9436660901	STAND PANEL RIGHT HAND
D0600404	9438200156	FOG LAMP RH
D0600405	9438200056	FOG LAMP LH
D0700145	9415220167	RUBBER STRAP
D0700171	9438840060	AIR GRILLE, BUMPER LEFT HAND
D0700172	9438840160	AIR GRILLE, BUMPER RIGHT HAND
DB2.0143	9305200019	REAR FRONT MUDGUARD LEFT HAND
DB2.0144	9305200020	REAR MUDGUARD REAR LEFT HAND
DB2.0145	9305200119	REAR FRONT MUDGUARD RIGHT HAND
DB2.0146	9305200120	REAR MUDGUARD REAR RIGHT HAND
DB2.0147CZ	9305200207	REAR TOP MUDGUARD W/O STRAPE (MEDIUM)
DB2.0320	9438800004,9438804473	SIDE BUMPER WITH FOG LAMP & VENT HOLES LEFT HAND
DB2.0321	9438800104,9438804573	SIDE BUMPER WITH FOG LAMP & VENT HOLES RIGHT HAND
DB2.0326	9305200419	REAR MUDGUARD (TWO WHEELS TYPE)
DB2.0353	9305200007	REAR TOP MUDGUARD LOW RIGHT HAND=LEFT HAND
DB2.0642	9436662701	FOOTBOARD RIGHT HAND
DB2.0643	9436662601	FOOTBOARD LEFT HAND
DB2.0688	9438804872	CORNER BUMPER LH
DB2.0689	9438804972	CORNER BUMPER RH
DB2.0722	9438201661,9438201461	HEADLAMP LH MANUAL AND ELECTRIC
DB2.0723	9438201761,9438201561	HEADLAMP RH MANUAL AND ELECTRIC
DB2.0859	9438842022,9438843022	CORNER PANEL LEFT HAND
DB2.0860	9438841922,9438842922	CORNER PANEL RIGHT HAND
DB2.0861	9438841822,9438842722	AIR CNVERVER RIGHT HAND
DB2.0862	9438841722,9438842622	AIR CNVERVER LEFT HAND
DB2.0869	9438851325	MIDDLE SPOILER
DB2.0870	9438851225	SIDE SPOILER RIGHT HAND
DB2.0871	9438851125	SIDE SPOILER LEFT HAND
DB2.0872	9438851522	GRILLE, SPOILER RIGHT HAND
DB2.0873	9438851422	GRILLE, SPOILER LEFT HAND
DB2.0874	9438851022	BUMPER GARNISH RIGHT HAND
DB2.0875	9438850922	BUMPER GARNISH LEFT HAND

ALT. D_REF.	O.E.M. REF.	DESCRIPTION
DB2.0878	9438851825	MIDDLE SPOILER
DB2.0880	9438851625	LEFT HAND SIDE SPOILER
DB2.0881	9438851122	COVER MIDDLE SPOILER
DB2.0885	9438851322	GRILLE, SPOILER RIGHT HAND
DC0.0561	0028100816,0028103716,9408102616,9418101016	MIRROR MANUAL NO HEATED
DC0.1340	9416661901	UPPER STEP BOARD LEFT HAND
DC0.1341	9416662001	UPPER STEP BOARD RIGHT HAND
DC0.1342	9416663328	LOWER STEP PANEL RIGHT HAND=LEFT HAND
DC0.1343	9416663428	UPPER STEP PANEL RIGHT HAND=LEFT HAND
DC0.1347	9416663528	STEP PANEL RIGHT HAND=LEFT HAND
DC0.1348	9416663728	LOWER STEP BOARD LEFT HAND
DC0.1349	9416663828	LOWER STEP BOARD RIGHT HAND
DC2.2304	0028113333,0028113533,A0028113333	MIRROR GLASS CLASS II LH HEATED R1200
DC2.2305	0028113433,A0028113433	MIRROR GLASS CLASS II RH HEATED R1200
DC2.2306	0028113833,A0028113833	WIDE ANGLE MIRROR GLASS CLASS IV RH MANUAL HEATED R300
DC2.2307	0028113733,A0028113733	WIDE ANGLE MIRROR GLASS CLASS IV LH MANUAL HEATED R300
DC2.2308	9438110407,A9438110407	MAIN MIRROR COVER RH CLASS II
DC2.2309	9438110307,A9438110307	MAIN MIRROR COVER LH CLASS II
DC2.2313	9438105116,A9438105116	FRONT MIRROR CLASS VI RH HETEADE R300
DC2.2976	9305200107	MUDGUARD
DB2.0721	A9438202361	HEAD LAMP MAN. (HID TYPE) RH; H1, H7, D15, PY21W, W5W
DB2.0720	A9438202261	HEAD LAMP MAN. (HID TYPE) LH; H1, H7, D15, PY21W, W5W
DC2.3231	9438805172	SIDE BUMPER RH W/FOG LAMP & VENT & NOZZLE HOLE (SMOOTH)
DC2.3232	9438805072	SIDE BUMPER LH W/FOG LAMP & VENT & NOZZLE HOLE (SMOOTH)
DE0.0150	A0015406370	REAR TAIL LAMP RH 5 FUNCTIONS W/SOCKET
DE0.0151	A0015406270	REAR TAIL LAMP LH 5 FUNCTIONS W/SOCKET
DE0.0181	9438200221,A9438200221,9418200521	SIDE LAMP LH
DE0.0182	9438200321,A9438200321,9418200921	SIDE LAMP RH
DC2.2302	9438106016	COMPLETE MIRROR CLASS II+ IV RH. MAIN MIRROR CLASS II ELECTRIC R1200, WIDE ANGLE MIRROR CLASS IV MANUAL R300., HEATED
DC2.2303	9438105816	COMPLETE MIRROR CLASS II+ IV LH. MAIN MIRROR CLASS II ELECTRIC R1200, WIDE ANGLE MIRROR CLASS IV MANUAL R300., HEATED

M-BENZ ACTROS MP IV (CLASSIC + STREAM SPACE) 2011-->



The parts referenced in this catalog are not original, but are perfectly adaptable to the models to which they are intended.
 The use of the manufacturers' marks and the original references is done exclusively for the purpose of indicating the model to which each piece is destined.



DC2.3100



DC2.2210



DC2.3627



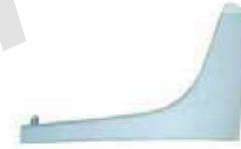
DC2.2208



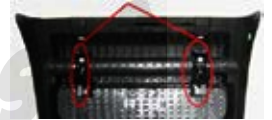
DC2.2895



DC2.2201



DC2.2897



DC2.2207



DC2.3188



DC2.2205



DC2.2907



DC2.2206



DC2.3189



DC2.2931



DC2.2204



DC2.2908



DC2.2910



DC2.2909



DC2.3099



DC2.2210



DC2.3628



DIESSA
DIESSA

DIESSA
DIESSA

DIESSA
DIESSA



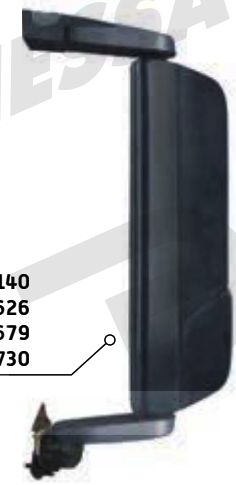
DC2.2926



DC2.2900



DC2.3139
DC2.3625 (cover)
DC2.3683 (glass)
DC2.3729



DC2.3140
(cover) DC2.3626
(glass) DC2.3679
DC2.3730



DC2.2925



DC2.2903



DC2.3141



DC2.3142

DC2.2987
DC2.3617
DC2.3471
DC2.3289



DC2.3624



DC0.0561



DC2.2986
DC2.3622
DC2.3470
DC2.3290



DC2.3623



DC2.2213

DC2.3234



DB2.0800



DB2.0800



DC2.3342



DC2.2214



DC2.2215



DC2.2215



M-BENZ ACTROS MP IV (CLASSIC + STREAM SPACE) 2011-->

ALT. D_REF.	O.E.M. REF.	DESCRIPTION
DB2.0800	0005445211,0005445411,0005447211,000544541110	SIDE LAMP LED RH-LH
DC0.0561	0028100816,0028103716,9408102616,9418101016	MIRROR MANUAL NO HEATED
DC2.2197	9608855525	CORNER BUMPER (WHITE) LEFT HAND
DC2.2198	9608855625	CORNER BUMPER RIGHT HAND. WHITE
DC2.2197GR	9608855525-7G99	CORNER BUMPER (GREY) LEFT HAND
DC2.2198GR	96088556257G99	CORNER BUMPER RIGHT HAND. GREY
DC2.2199	9608852108-9135	BUMPER COVER
DC2.2200	9608850181	BUMPER COVER
DC2.2201	9608850311	STEP PANEL ON CENTRAL BUMPER
DC2.2202	9606661402	FOOTBOARD RIGHT HAND (WHITE PRIMED)
DC2.2203	9606661102	FOOTBOARD LEFT HAND (WHITE PRIMED)
DC2.2204	9606660605	FOOTBOARD CAP RIGHT HAND=LEFT HAND (WHITE)
DC2.2205	9605200119	FRONT MUDGUARD RIGHT HAND REAR WHEEL
DC2.2206	9605200019	FRONT MUDGUARD LEFT HAND REAR WHEEL
DC2.2207	9605200520	REAR MUDGUARD RIGHT HAND REAR WHEEL
DC2.2208	9605200007	TOP MUDGUARD WITH STRAPE. FLAT
DC2.2210	9605200067	STRAPE MUDGUARD
DC2.2213	9608853974	FOG LAMP COVER RIGHT HAND. DAYTIME LIGHT
DC2.2214	9608853874	FOG LAMP COVER LEFT HAND DAYTIME LIGHT
DC2.2215	9606662228	STEP PANEL RIGHT HAND=LEFT HAND UPPER - LOWER
DC2.2289	9616663301	FOOTBOARD RIGHT HAND WHITE PRIMED
DC2.2290	9616663201	FOOTBOARD LEFT HAND WHITE PRIMED
DC2.2893	9607510530	AIR INLET, RH
DC2.2894	9607510430	AIR INLET, LH
DC2.2895	9608803705	HEAD LAMP RIM, RH
DC2.2897	9608803605	HEAD LAMP RIM, LH
DC2.2900	9608859908	UPPER HEADLAMP COVER, RH
DC2.2903	9608859808	UPPER HEADLAMP COVER, LH
DC2.2905	9607511130	AIR DEFLECTOR, RH
DC2.2906	9607511030	AIR DEFLECTOR, LH
DC2.2907	9618851353	LOWER GRILLE
DC2.2908	9608852684	LOWER GRILLE RH
DC2.2909	9608852584	LOWER GRILLE LH
DC2.2910	9618850153	LOWER MIDDLE GRILLE

ALT. D_REF.	O.E.M. REF.	DESCRIPTION
DC2.2925	9608859608	UPPER HEADLAMP COVER, LH
DC2.2926	9608859708	UPPER HEADLAMP COVER, RH
DC2.2931	9618851453	LOWER MIDDLE GRILLE, INNER
DC2.2986	9608200239	HEAD LAMP UNIT, MANUAL, LH H1, H7; H1, H7, PY21W, W5W
DC2.2987	9608200339	HEAD LAMP UNIT, MANUAL, RH H1, H7; H1, H7, PY21W, W5W
DC2.2202GR	96066614027G99	FOOTBOARD RH GREY
DC2.2203GR	96066611027G99	FOOTBOARD LH GREY
DC2.2289GR	96166633017G99	FOOTBOARD RL WITH LIGHT HOLE GREY
DC2.2290GR	96166632017G99	FOOTBOARD HL WITH LIGHT HOLE GREY
DC2.3139	9608104316	COMPLETE MIRROR CLASS II & CLASS IV RH . MAIN MIRROR CLASS JJ ELECTRIC, WIDE ANGLE MIRROR CLASS IV MANUAL; HEATED, BLACK; R1200+ R300; CABUNE 2500
DC2.3140	9608103516	COMPLETE MIRROR CLASS II & CLASS IV LH . MAIN MIRROR CLASS JJ ELECTRIC, WIDE ANGLE MIRROR CLASS IV MANUAL; HEATED, BLACK; R1200+ R300; CABUNE 2500
DC2.3234	9608200556	FOG LAMP UNIT, RH; H3
DC2.3342	9608200456	FOG LAMP UNIT, LH H3
DC2.3471	9608200539	HEAD LAMP UNIT MANUAL W/DAYTIME RH LED H1, H7 PY21W, W5W
DC2.2196BL	9608801790-9135	CENTRAL BUMPER (WHITE)
DC2.2196	96088017907G99	CENTRAL BUMPER (GREY)
DC2.2198	9608855625	CORNER BUMPER (WHITE), RH
DC2.2197	9608855525	CORNER BUMPER (WHITE), LH
DC2.3187BL	96088019909135	CENTRAL BUMPER SHORT (WHITE)
DC2.3187	96088019907G99	CENTRAL BUMPER SHORT (GREY)
DC2.2199	9608852108-9135	BUMPER COVER (WHITE)
DC2.3679	0028116333	MIRROR GLASS LH
DC2.3623	9608112507	MIRROR COVER RH
DC2.3624	9608112407	MIRROR COVER LH
DC2.3627	9608111107	MIRROR COVER RH
DC2.3628	9608111007	MIRROR COVER LH
DC2.3625	9608111507	MIRROR COVER RH
DC2.3626	9608111407	MIRROR COVER LH
DC2.3100	9608111907	CHROME MIRROR COVER RH
DC2.3099	9608111807	CHROME MIRROR COVER LH
DC2.3141	9608112307	MIRROR COVER, LOWER, RH
DC2.3142	9608112207	MIRROR COVER, LOWER, LH

M-BENZ ACTROS MP IV (CLASSIC + STREAM SPACE) 2011-->

ALT. D_REF.	O.E.M. REF.	DESCRIPTION
DC2.3683	0028114633	MIRROR GLASS RH
DC2.3617	9608200939	HEAD LAMP, DAY LIGHT, H1, D1S, RH
DC2.3622	9608200839	HEAD LAMP, LH, DAY LIGHT, H1, D1S
DC2.3729	9608104716	COMPLETE SHORT MIRROR CLASS II & CLASS IV RH . MAIN MIRROR CLASS JJ ELECTRIC, WIDE ANGLE MIRROR CLASS IV MANUAL; HEATED, BLACK; R1200+R300; CABUNE 2500
DC2.3730	9608103516	COMPLETE SHORT MIRROR CLASS II & CLASS IV LH . MAIN MIRROR CLASS JJ ELECTRIC, WIDE ANGLE MIRROR CLASS IV MANUAL; HEATED, BLACK; R1200+R300; CABUNE 2500
DC2.3289	9608200739	HEAD LAMP, W/O DAY LIGHT, H1, D1S
DC2.3290	9608200639	HEAD LAMP, W/O DAY LIGHT, H1, D1S
DC2.3470	9608200439	HEAD LAMP, LH, DAY LIGHT, H1, H7

M-BENZ ACTROS MP IV (GIGA, BIG SPACE) 2011--->



DC2.2218GR



DC2.2200



DC2.2218



DC2.2204



DC2.2219GR



DC2.2219



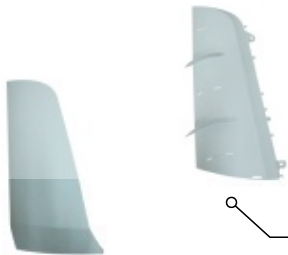
DC2.2216



DC2.2217



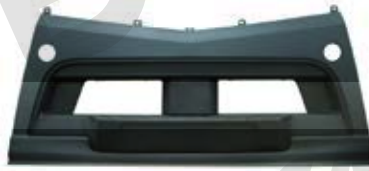
DC2.2196BL



DC2.3055



DC2.2216GR



DC2.2217GR



DC2.3056



DC2.3056



DC2.3054

DC2.3053

DC2.2196



DC2.2217GR

DC2.3056

DC2.3054



DC2.2199



DC2.3100



DC2.3627



DC2.3628

DC2.3099

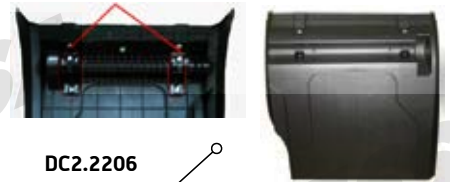


DC2.2199GR

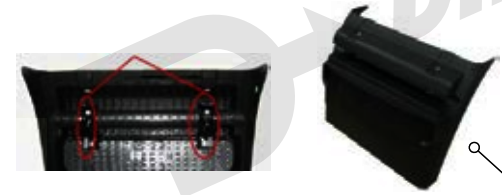
The parts referenced in this catalog are not original, but are perfectly adaptable to the models to which they are intended. The use of the manufacturers' marks and the original references is done exclusively for the purpose of indicating the model to which each piece is destined.



DC2.2205



DC2.2206



DC2.2207



DC2.2207



DC2.2208



DC2.2896



DC2.2201



DC2.2898



DC2.3623



DC2.2896GR



DC2.3235



DC2.2898GR



DC2.3624



DC2.3236



DC2.2210



DC2.2908



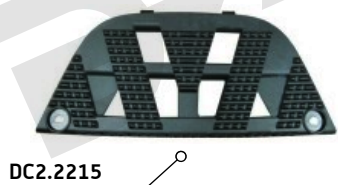
DC2.2910



DC2.2909



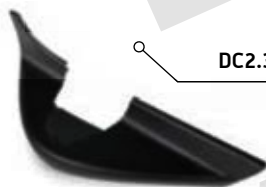
DC2.2210



DC2.2987
DC2.3617
DC2.3471
DC2.3289



DC2.3234



DB2.0800



DC2.3142



DB2.0800



DC2.2986
DC2.3622
DC2.3470
DC2.3290



DC2.3342

DC2.3140
DC2.3626



DC2.2904

DC2.2902



DC2.2214



DC2.2215

M-BENZ ACTROS MP IV (GIGA, BIG SPACE) 2011--->

ALT. D_REF.	O.E.M. REF.	DESCRIPTION
DB2.0800	0005445211,0005445411,0005447211,000544541110,A0005445411	SIDE LAMP LED RH-LH
DC0.0561	0028100816,0028103716,9408102616,9418101016	MIRROR MANUAL NO HEATED
DC2.2199	9608852108-9135	BUMPER COVER
DC2.2200	9608850181	BUMPER COVER
DC2.2201	9608850311	STEP PANEL ON CENTRAL BUMPER
DC2.2204	9606660605	FOOTBOARD CAP RIGHT HAND=LEFT HAND (WHITE)
DC2.2205	9605200119	FRONT MUDGUARD RIGHT HAND REAR WHEEL
DC2.2206	9605200019	FRONT MUDGUARD LEFT HAND REAR WHEEL
DC2.2207	9605200520	REAR MUDGUARD RIGHT HAND REAR WHEEL
DC2.2208	9605200007	TOP MUDGUARD WITH STRAPE. FLAT
DC2.2210	9605200067	STRAPE MUDGUARD
DC2.2211	9608853774	FOG LAMP COVER RIGHT HAND
DC2.2212	9608853674	FOG LAMP COVER LEFT HAND
DC2.2213	9608853974	FOG LAMP COVER RIGHT HAND. DAYTIME LIGHT
DC2.2214	9608853874	FOG LAMP COVER LEFT HAND DAYTIME LIGHT
DC2.2215	9606662228	STEP PANEL RIGHT HAND=LEFT HAND UPPER - LOWER
DC2.2216GR	9608855025-7G99	CORNER BUMPER RIGHT HAND
DC2.2217GR	9608854925-7G99	CORNER BUMPER LEFT HAND
DC2.2218	9606661903	FOOTBOARD RIGHT HAND WHITE PRIMED
DC2.2216	9608855025	CORNER BUMPER RIGHT HAND. WHITE PRIMED
DC2.2217	9608854925	CORNER BUMPER LEFT HAND. WHITE PRIMED
DC2.2219	9606661703	FOOTBOARD LEFT HAND. WHITE PRIMED
DC2.2896	9608804005	HEADLAMP RIM, RH
DC2.2898	9608803905	HEADLAMP RIM, LH
DC2.2899	9608856701	UPPER HEADLAMP COVER, RH
DC2.2901	9608859508	TIP HEADLAMP COVER, RH
DC2.2902	9608856601	UPPER HEADLAMP COVER, LH
DC2.2904	9608859408	TIP HEADLAMP COVER, LH
DC2.2908	9608852684	LOWER GRILLE (WHITE PRIMER), RH
DC2.2909	9608852584	LOWER GRILLE (WHITE PRIMER), LH
DC2.2910	9618850153	LOWER GRILLE (WHITE PRIMER), MIDDLE
DC2.2986	9608200239	HEAD LAMP UNIT, MANUAL, LH H1, H7; H1, H7, PY21W, W5W

ALT. D_REF.	O.E.M. REF.	DESCRIPTION
DC2.2987	9608200339	HEAD LAMP UNIT, MANUAL, RH H1, H7; H1, H7, PY21W, W5W
DC2.3053	9607511330	AIR DEFLECTOR, RH
DC2.3054	9607511230	AIR DEFLECTOR, LH
DC2.3055	9607510730	AIR INLET, RH
DC2.3056	9607510630	AIR INLET, LH
DC2.3139	9608104316	COMPLETE MIRROR CLASS II & CLASS IV RH. MAIN MIRROR CLASS JJ ELECTRIC, WIDE ANGLE MIRROR CLASS IV MANUAL; HEATED, BLACK; R1200+ R300; CABUNE 2500
DC2.3140	9608103516	COMPLETE MIRROR CLASS II & CLASS IV LH. MAIN MIRROR CLASS JJ ELECTRIC, WIDE ANGLE MIRROR CLASS IV MANUAL; HEATED, BLACK; R1200+ R300; CABUNE 2500
DC2.3188	9608854825	CORNER BUMPER, RH (GREY)
DC2.3189	9608854725	CORNER BUMPER, LH (GREY)
DC2.2896GR	96088240057G99	HEADLAMP RIM, RH (GREY)
DC2.2898GR	96088239057G99	HEADLAMP RIM, LH (GREY)
DC2.3234	9608200556	FOG LAMP UNIT, RH; H3
DC2.3235	9618850053	GRILLE, OUTER
DC2.3342	9608200456	FOG LAMP UNIT, LH H3
DC2.3468	9618850253	GRILLE, INNER
DC2.3471	9608200539	HEAD LAMP UNIT MANUAL W/DAYTIME RH LED H1, H7 PY21W, W5W
DC2.2196BL	9608801790-9135	CENTRAL BUMPER (WHITE)
DC2.2196	96088017907G99	CENTRAL BUMPER (GREY)
DC2.2198	9608855625	CORNER BUMPER (WHITE), RH
DC2.2197	9608855525	CORNER BUMPER (WHITE), LH
DC2.3187BL	96088019909135	CENTRAL BUMPER SHORT (WHITE)
DC2.3187	96088019907G99	CENTRAL BUMPER SHORT (GREY)
DC2.2199	9608852108-9135	BUMPER COVER (WHITE)
DC2.2199GR	96088521087G99	BUMPER COVER (GREY)
DC2.2218	96166618019135	FOOTBOARD RH (WHITE PRIMED)
DC2.2219	9616661601	FOOTBOARD LH (WHITE PRIMED)
DC2.3679	0028116333	MIRROR GLASS LH
DC2.3623	9608112507	MIRROR COVER RH
DC2.3624	9608112407	MIRROR COVER LH
DC2.3627	9608111107	MIRROR COVER RH

M-BENZ ACTROS MP IV (GIGA, BIG SPACE) 2011--->

ALT. D. REF.	O.E.M. REF.	DESCRIPTION
DC2.3628	9608111007	MIRROR COVER LH
DC2.3625	9608111507	MIRROR COVER RH
DC2.3626	9608111407	MIRROR COVER LH
DC2.3100	9608111907	CHROME MIRROR COVER RH
DC2.3099	9608111807	CHROME MIRROR COVER LH
DC2.3141	9608112307	MIRROR COVER, LOWER, RH
DC2.3142	9608112207	MIRROR COVER, LOWER, LH
DC2.3617	9608200939	HEAD LAMP, DAY LIGHT, H1, D1S, RH
DC2.3622	9608200839	HEAD LAMP, LH, DAY LIGHT, H1, D1S
DC2.3289	9608200739	HEAD LAMP, W/O DAY LIGHT, H1, D1S
DC2.3290	9608200639	HEAD LAMP, W/O DAY LIGHT, H1, D1S
DC2.3470	9608200439	HEAD LAMP, LH, DAY LIGHT, H1, H7

